



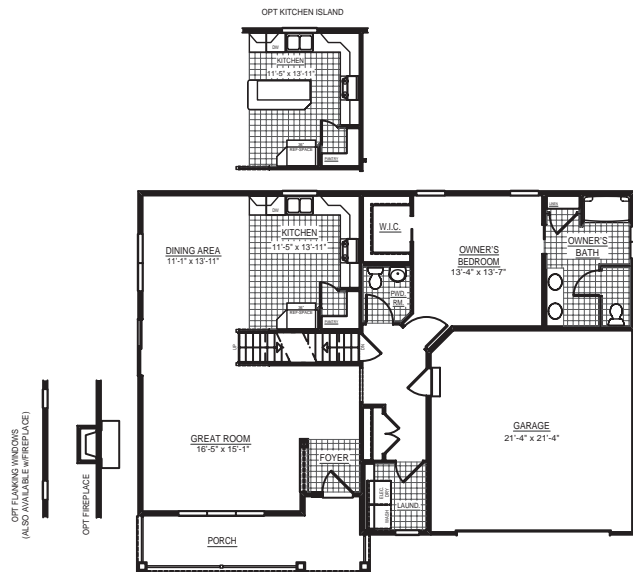
ELEVATION A

Say hello to the  
**e-home**

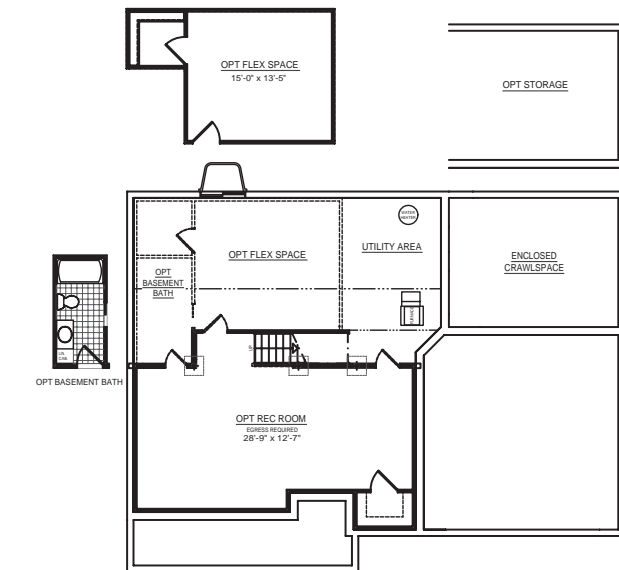
energy efficient. eco-friendly.

S&A Homes has combined cutting edge technology and building practices to offer you a high performance home that is energy efficient, eco-friendly and healthier, which ensures you protect your investment, your family and the environment without sacrificing the value that has helped S&A Homes build over 15,000 homes.

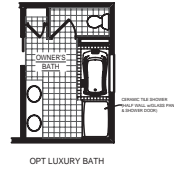
**S&A**  
HOMES  
Building Forward ▶



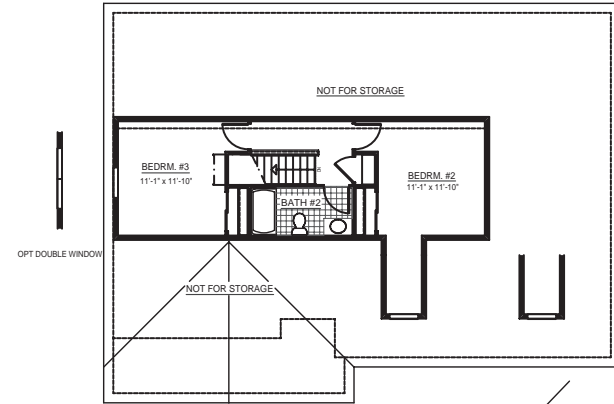
**MAIN LEVEL**



**LOWER LEVEL**



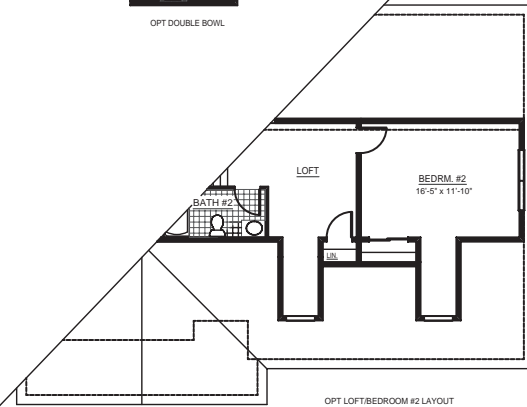
OPT LUXURY BATH



**UPPER LEVEL**



OPT DOUBLE BOWL



OPT LOFT/BEDROOM #2 LAYOUT



**\*Additional Design Options Available**  
 This brochure is for illustrative purposes only and not part of any legal contract. Actual product and specifications may vary in dimensions or details from these drawings.

"We are pledged to the letter and spirit of U.S. policy for the achievement of equal housing opportunity throughout the nation. We encourage and support an affirmative advertising and marketing program in which there are no barriers to obtaining housing because of race, color, religion, sex, handicap, familial status or national origin."

